

GCCA+ 10th Anniversary: GCCA+ impact after 10 years of promoting and implementing long-term adaptation strategies in LDCs and SIDS



www.gcca.eu | www.ec.europa.eu/europeaid | www.europa.eu/capacity4dev/gcca-community

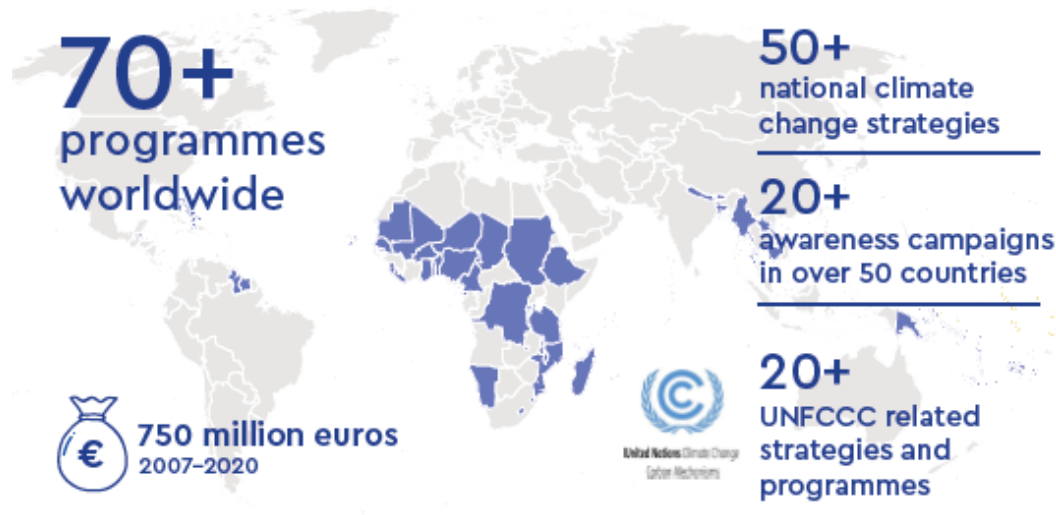


COP24·KATOWICE 2018
UNITED NATIONS CLIMATE CHANGE CONFERENCE

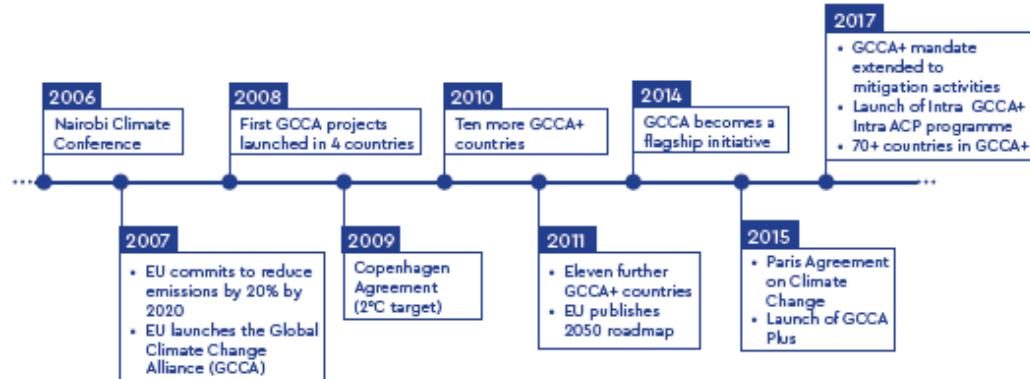
BUILDING CLIMATE RESILIENCE

Mitigation and adaptation in a changing climate

The Global Climate Change Alliance Plus (GCCA+)



Supporting the fight against climate change



Building partnerships through policy dialogue and awareness



Climate adaptation



Climate change mainstreaming and poverty reduction



Disaster Risk Reduction



Increasing resilience to climate-related stresses and shocks



Reduction of emissions from deforestation



Adaptation and mitigation strategies

Some of our interventions



Restoration of protective forests

Bangladesh, Benin, Eastern Caribbean, Mauritius, Suriname, Cape Verde, Mozambique



Early Warning Systems

Bangladesh, Benin, Lesotho, Ethiopia, Cape Verde, Pacific Region



Efficient cooking stoves

Djibouti, Guinea Bissau, Lesotho, Sierra Leone, Tanzania, Togo and Uganda



Enhanced access to climate change financing

20 countries



Training activities

17 countries



Our next challenge:

Climate change mitigation

GCCA+ Side Event - Objectives

Through presenting the impact after a decade long experience in adaptation planning, policy and implementation, the GCCA+ event tackles some crucial questions of COP24 such as:

- **How can long-term adaptation (planning and implementation) lead to better sustainable development outcomes?**
- **What are the GCCA+ key lessons learnt of long-term impact of adaptation actions in SIDS and LDCs?**
- **How can GCCA+ services stimulate the adaptation community to reflect on benefits of fostering and developing synergies among the adaptation community on long-term adaptation planning?**

Uganda: Mr. Kennedy N. Igbokwe, *Project Manager, FAO-GCCA+;*

Ghana: Mr. Augustine Collins Ntim, *Deputy Ministry of Local Government and Rural Development, LoCal GCCA+;*

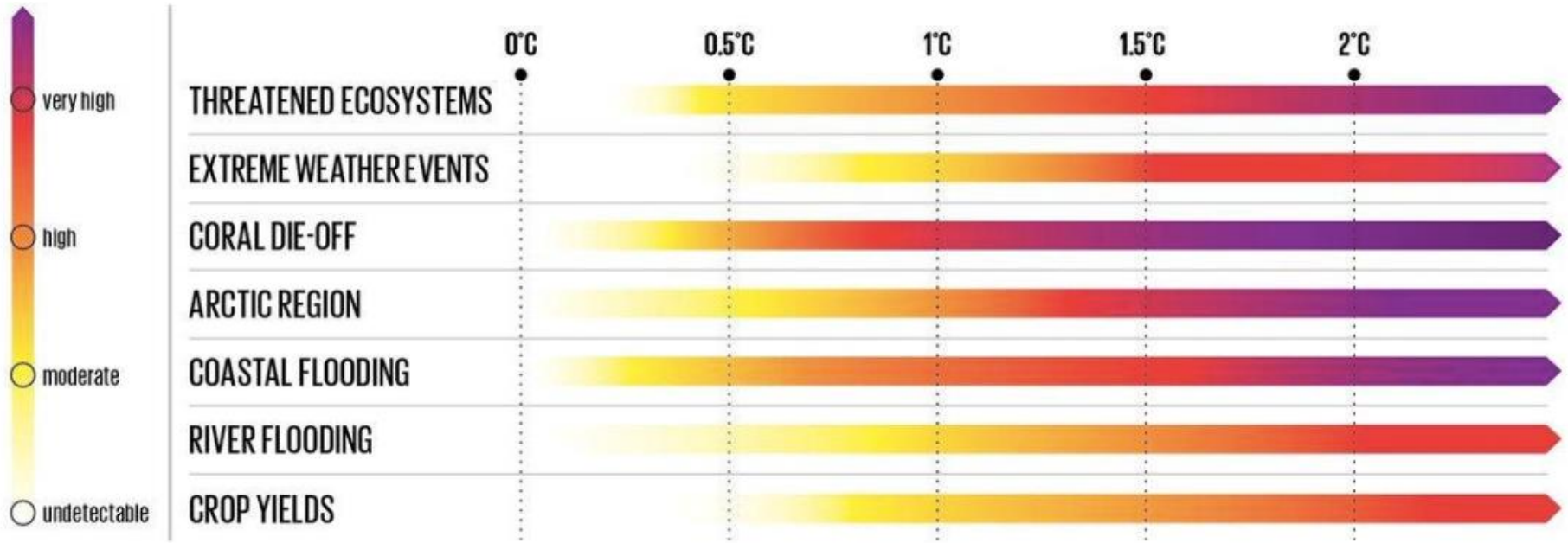
The Pacific Islands:

Mr. Espen Ronneberg, *Climate Change Adviser, SPREP & GCCA+ Scaling-up Pacific Adaptation –*

Mrs. Gillian Cambers, *GCCA Pacific Small Islands States project Manager, Pacific Community*

Myanmar: Dr. Kyaw Moe Oo, *Director General, Department of Meteorology and Hydrology (DMH), Ministry of Transport & Communication, Myanmar GCCA+ .*

RISING TEMPERATURES, RISING RISKS

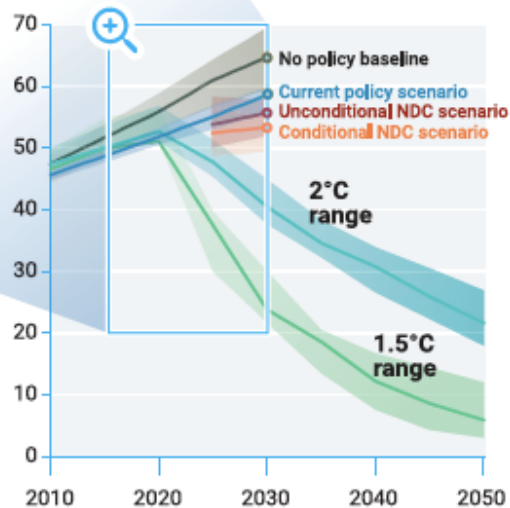
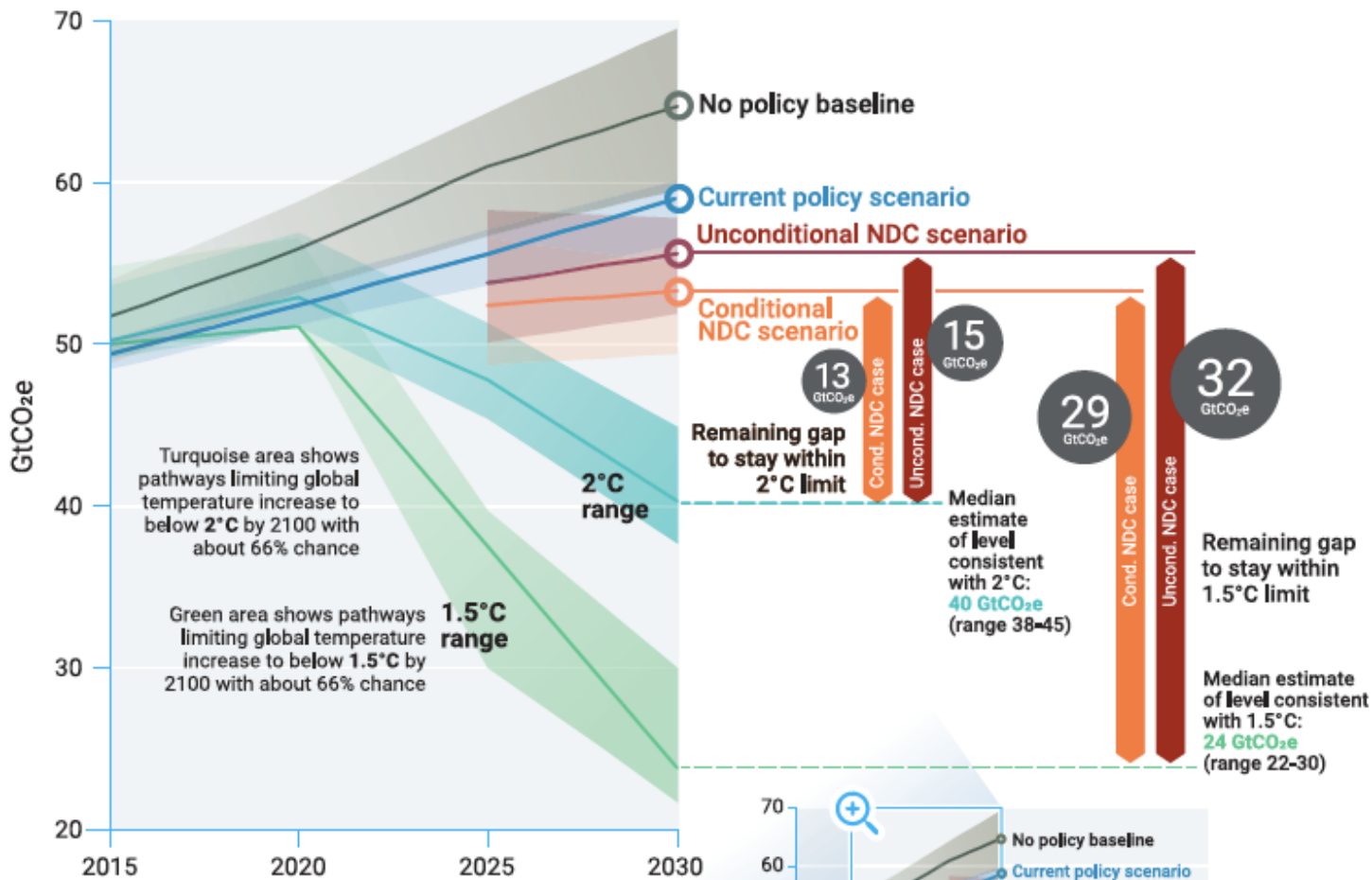


Source: IPCC Special Report on Global Warming of 1.5°C

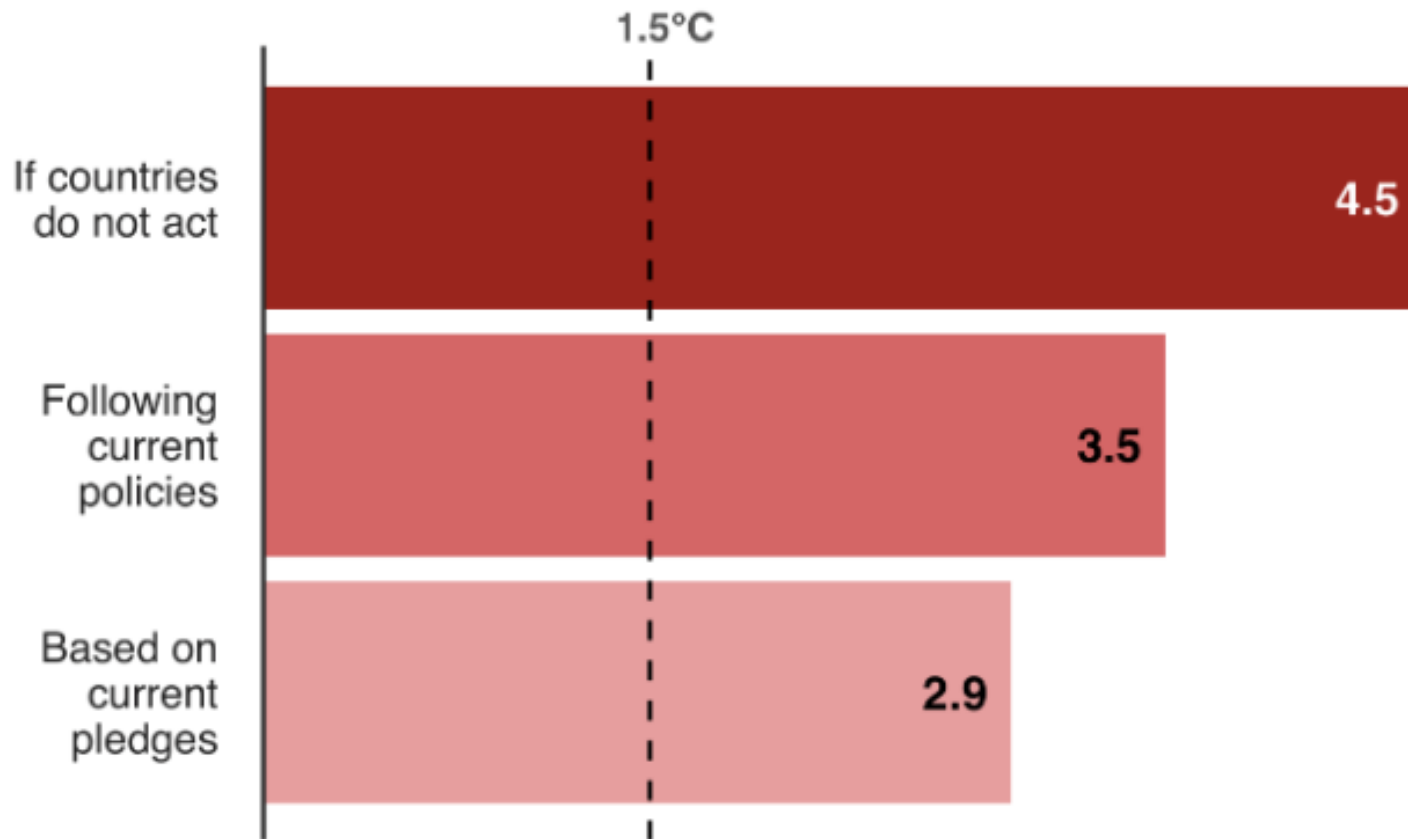


COP24 · KATOWICE 2018
UNITED NATIONS CLIMATE CHANGE CONFERENCE



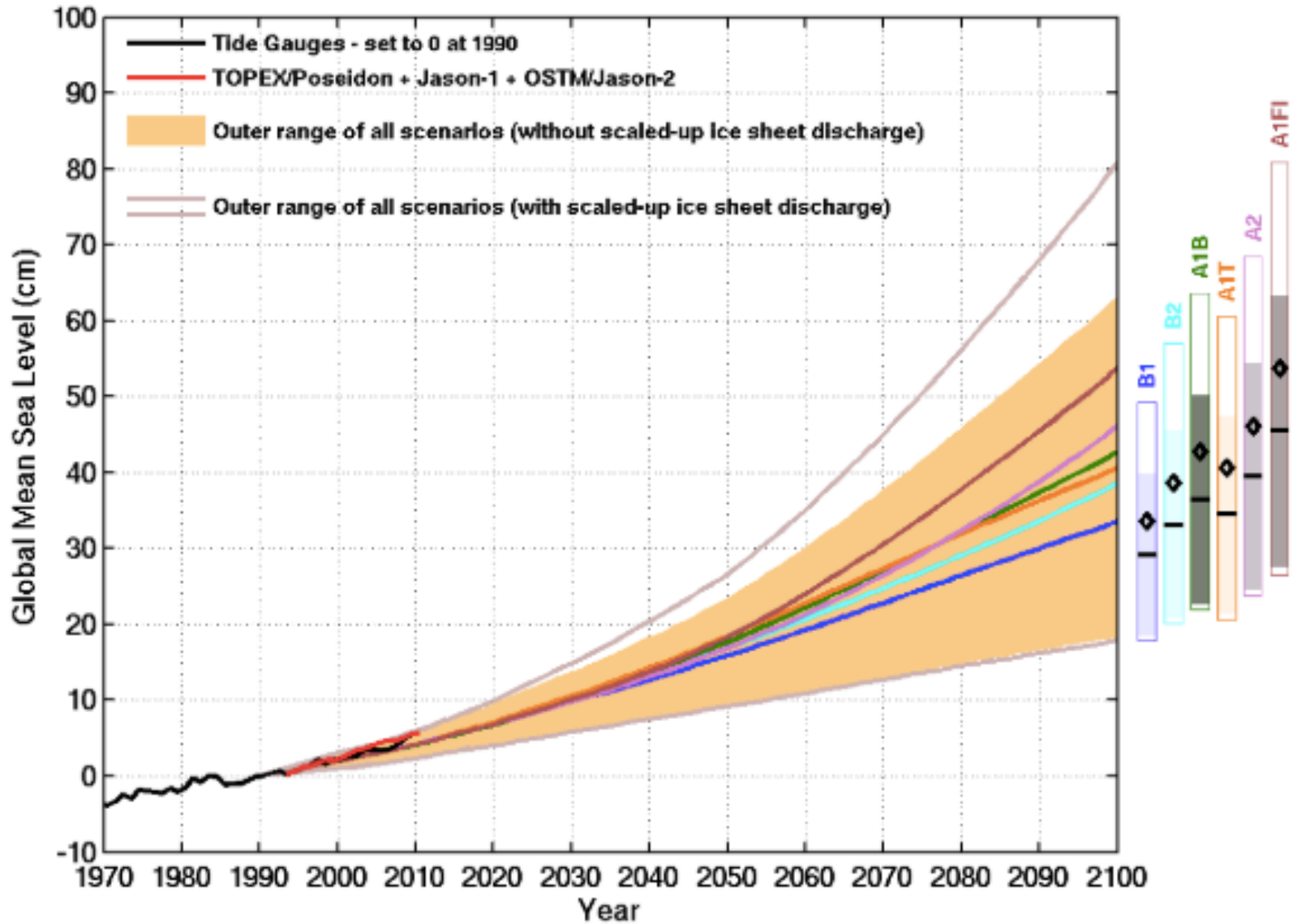


Average warming (°C) projected by 2100



Source: Climate Action Tracker, updated November 2017





www.gcca.eu



Funded by
the European Union

www.gcca.eu | www.ec.europa.eu/europeaid | www.europa.eu/capacity4dev/gcca-community
